

Name: _____
 Period _____

Date: _____
 Henderson - Math 8

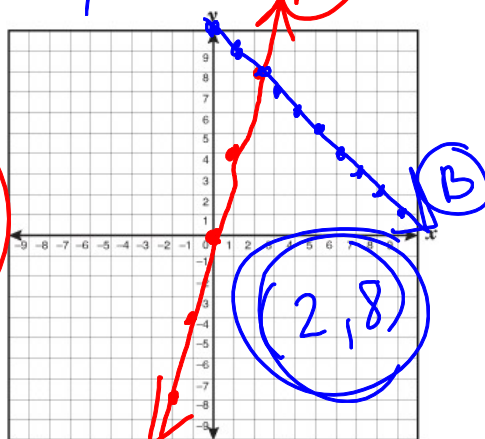
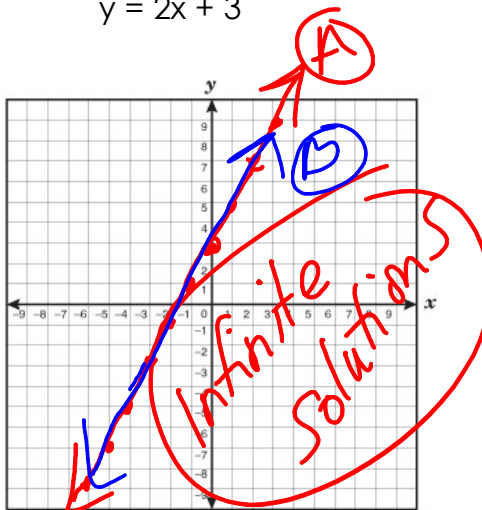
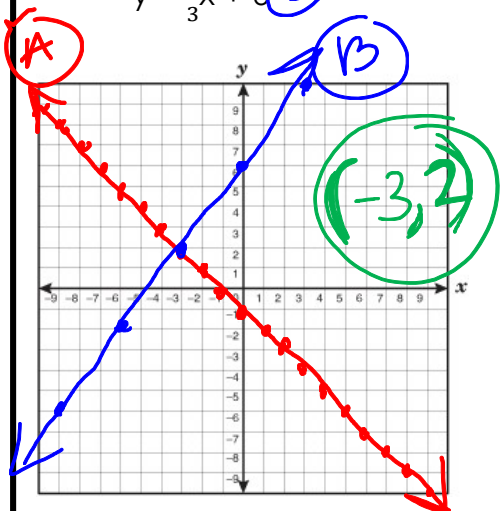
Homework for Week 16

Monday: HW# 16A (go to www.Aleks.com or www.hendersonmath.com for review) Find the solution to the system of equations graphically:

1.) $y = -x - 1$ (A)
 $y = \frac{4}{3}x + 6$ (B)

2.) $y = 2x + 3$ (A)
 $y = 2x + 3$

3.) $y = 4x$ (A)
 $y + x = 10$ (B)
 $y = -x + 10$ (A)



Tuesday: HW# 16B (go to www.khanacademy.org or www.Aleks.com for review)

Find the solution to the equation. Show all steps.

4.) $3 - \frac{2}{9}x = \frac{1}{3}x - 7$

$$\begin{array}{r} + \frac{2}{9}x + \frac{2}{9}x \\ \hline \end{array}$$

$$\begin{array}{r} 3 = \frac{5}{9}x - 7 \\ +7 \quad \quad +7 \end{array}$$

$$\begin{array}{r} 10 = \frac{5}{9}x \left(\frac{9}{5} \right) \end{array}$$

5.) $2x - 31 - 11x = -9x + 25$

Wed: HW#16C (go to www.Aleks.com or www.hendersonmath.com for review)

State if the equation shown is linear or non-linear.

6.) $y = 5x + 1$ _____ $2.7x - 1.9y = 8$ _____

7.) $y = 2x^{-1} - 4$ _____ $\frac{x}{7} + \frac{3}{4}y = 10$ _____

8.) $y = -3$ _____ $x^6 = 2$ _____ $x = y$ _____

9.) $y = \frac{2}{x} + 5$ _____ $y = \sqrt{x} + 8$ _____

Thursday: HW#16D (go to www.khanacademy.org or www.Aleks.com for review)

10.) Find the rate of change for the following data:

(5, 2) and (5, -6)

Answers

10) _____

11) _____

11.) Identify the rate of change in the following linear equation:

$$4y + 5x = 8$$

12) _____

12.) Which of the following is NOT a linear equation?

a) $y = \sqrt{x} + 6$

b) $\frac{1}{3}y = 2x + 3$

c) $y = 5x + 2$

d) $3.2x + 4.1y = 7.3$

13.) Is the graph shown to the right a function? Describe in words how you were able to determine your answer.

